

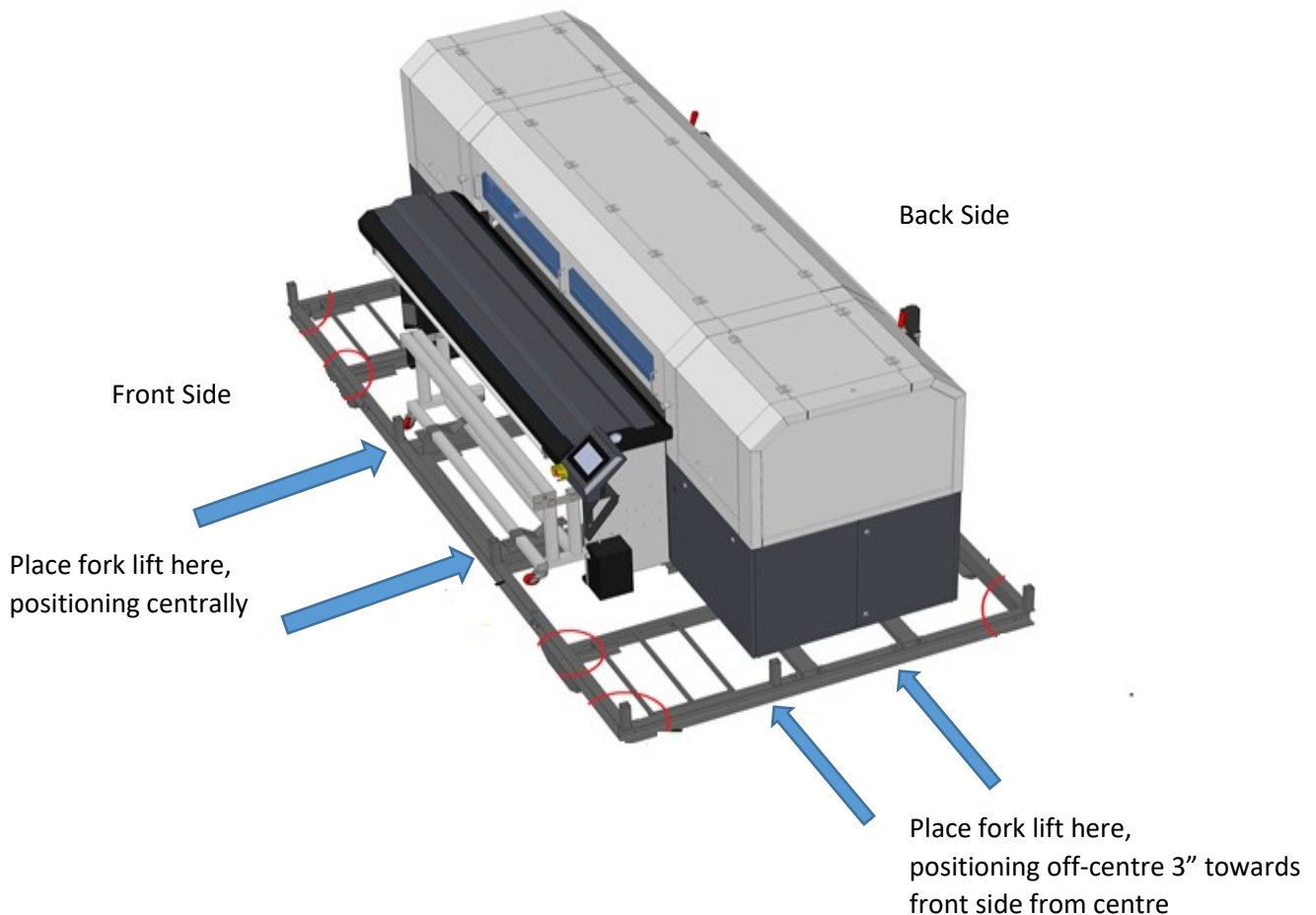
Unloading and Unpacking Instructions

Machine Net Weight: 1400kg, Machine Gross Weight: 2000kg
(approx.)

Unloading from container/lorry

**Note: Use only Fork Lifts (3tons capacity) to unload the Machine
(Requires 2 fork lifts to unload from Container/Lorry)**

- Using 1st fork lift, pull out portion of packing cage from the container/lorry.
- Place the 2nd fork lift from side
- Let the truck/lorry move forward.



Note: Make sure that the machine is properly balanced over the fork lifts.

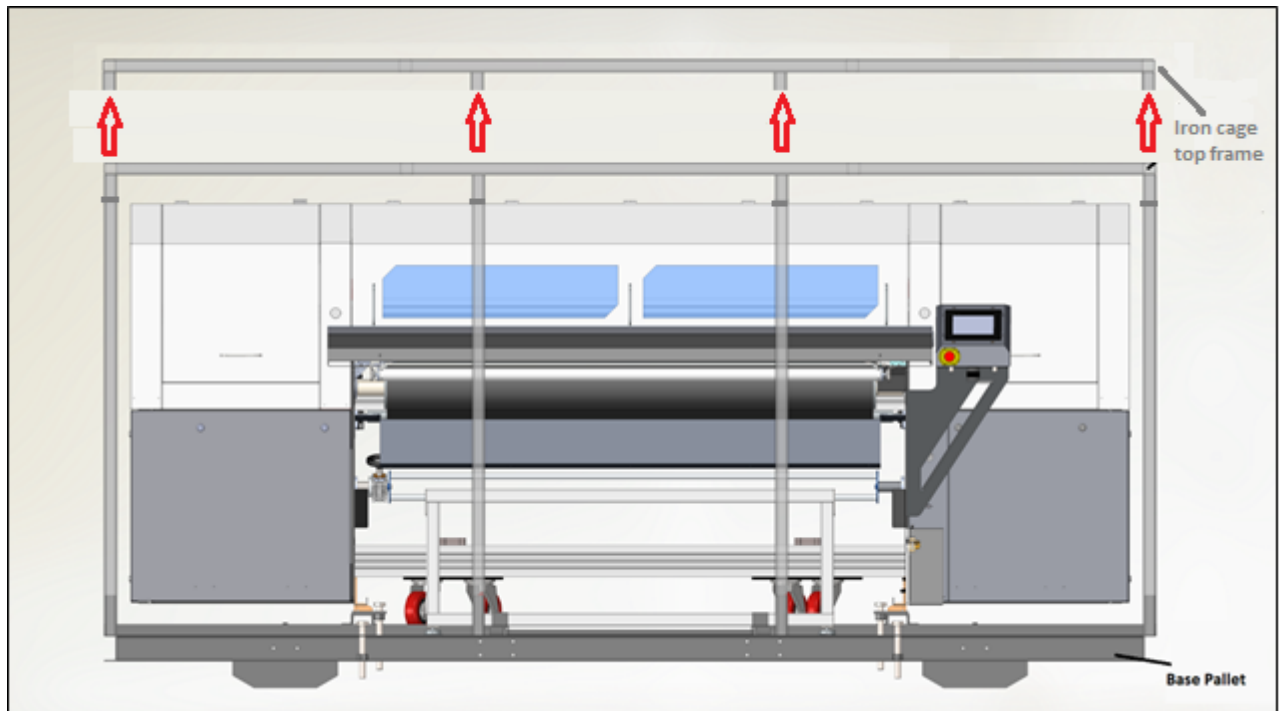
- Place the iron cage on even/levelled floor

Note: Please unload and unpack the machine in the presence of service engineer.

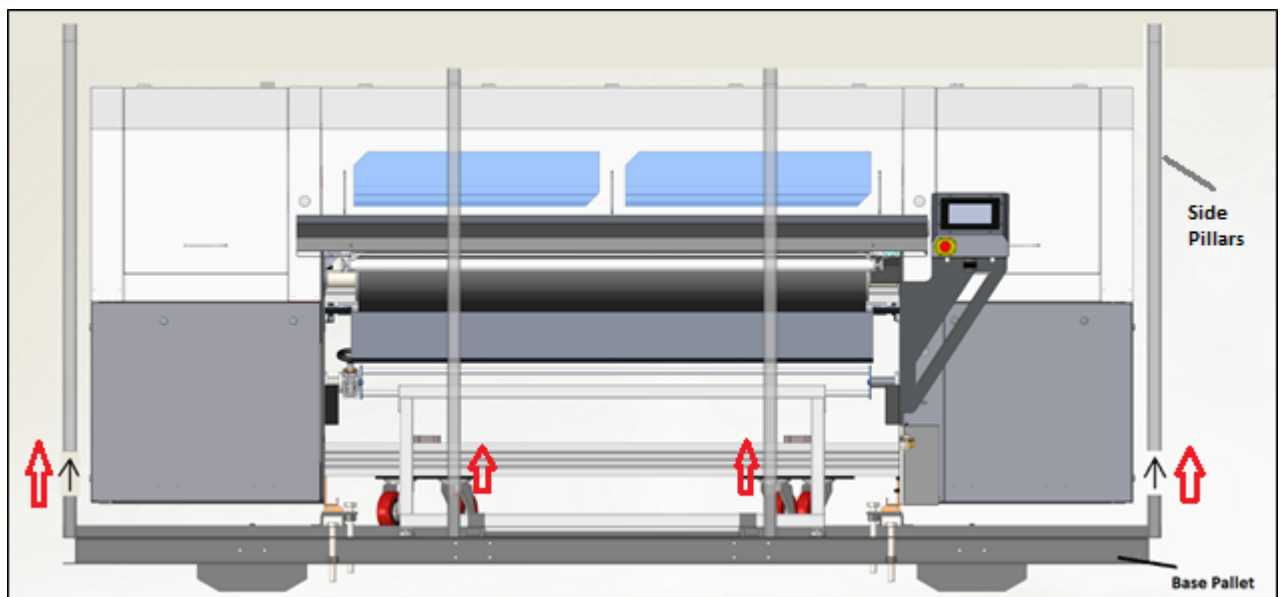
Removing the Iron cage

- Pull up the top frame of iron cage to remove it, its just sitting/resting over iron pillars (not screwed).
- Remove the iron pillars by pulling up, in the same way as done for top frame.

Removing Top frame



Removing Side Pillars

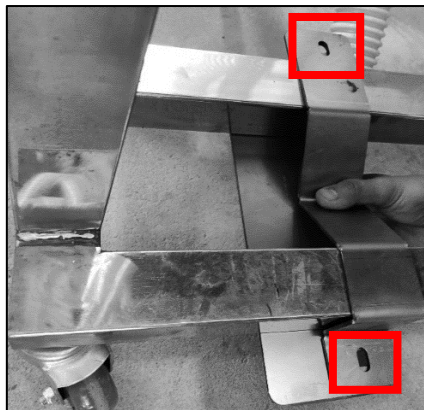


Removing the Machine and other parts from Pallet

Note: Please unpack the machine in the presence of service engineer.

Step 1: Remove the poly cover of the machine. Remove the supply and takeup rollers, water tank, Hose Pipes, Tub covers from inside the machine

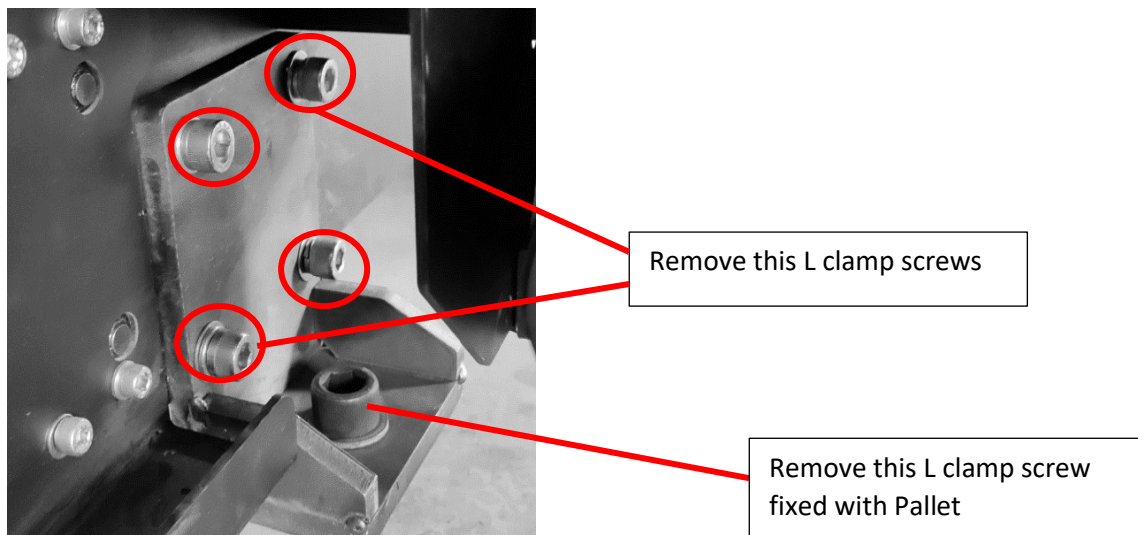
Step 2: Detach the washing tub from the pallet, by removing both tub fixing brackets fixed between washing tub and pallet, as shown below:



Step 3: Lift the washing tub from the trolley upper section, remove the washing tub with trolley, caring about balancing it, and place it.

Note: Hold and lift from the trolley section only (do not lift the upper tub unit only). Washing tub is just resting over the trolley.

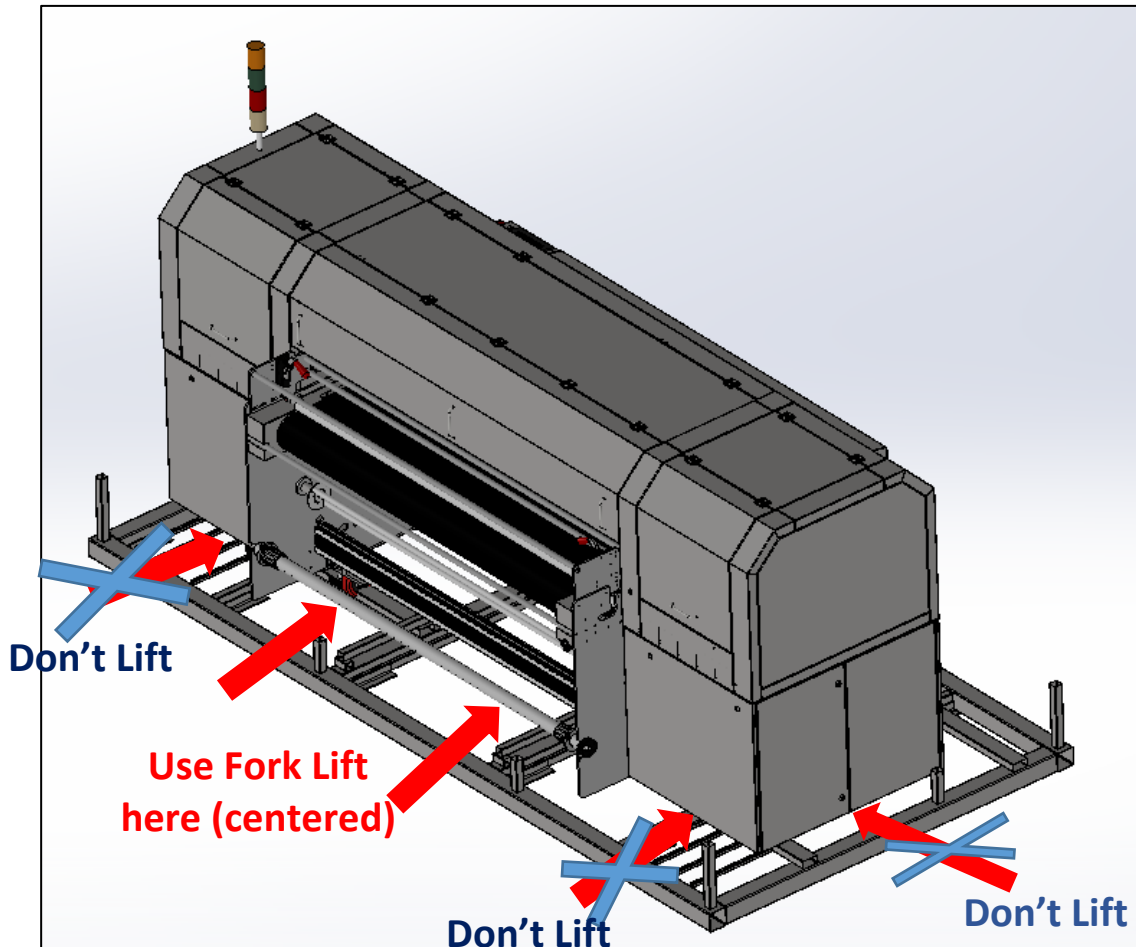
Step 4: Remove all the four L-clamps (at 4 inner corners) attached to the pallet and fixed at 4 inner corners by unscrewing the L clamp screws.



Step 5: Move up the 4 levelers fixed at outside corners.

Step 6: Insert fork lift arms as per the marking shown below, by centering and balancing.

Note: Don't lift from the extreme ends of the machine



Note: Make sure that the machine is properly balanced over the fork lifts.

Step 7: Place on even and clean surface, near to the Printer room.

Step 8: Locate the front and rear side of the printer.

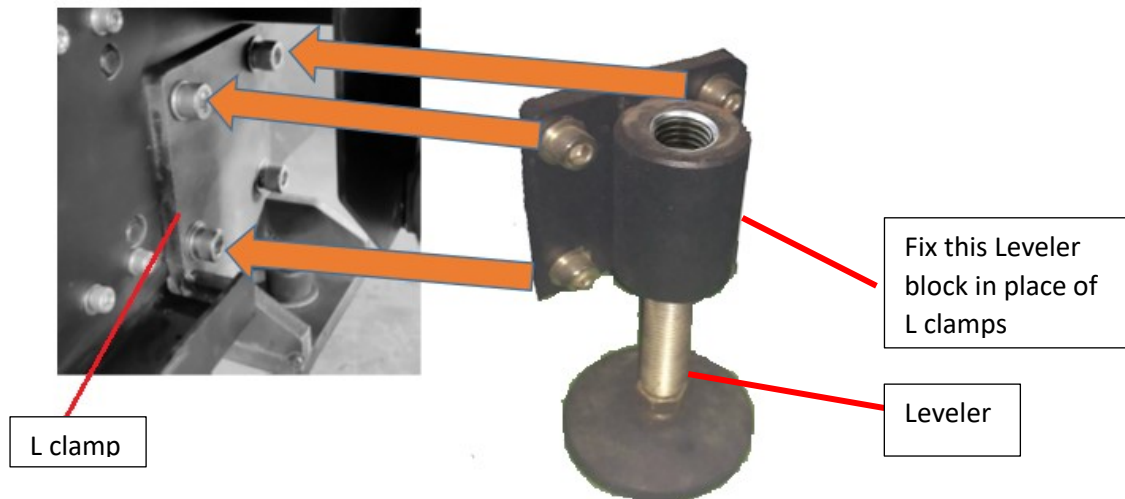
Step 9: Move the Machine to the Printer room keeping the desired orientation in mind.

Note: Don't move the machine unless the levelers are turned up fully.

Machine Levelling

Take out the levelers and leveler blocks (4nos.) from the accessories box, insert levelers into the leveler blocks.

Fix the leveler block with same 4 mounting screws (taken out when L clamps removed) at the L clamp position.

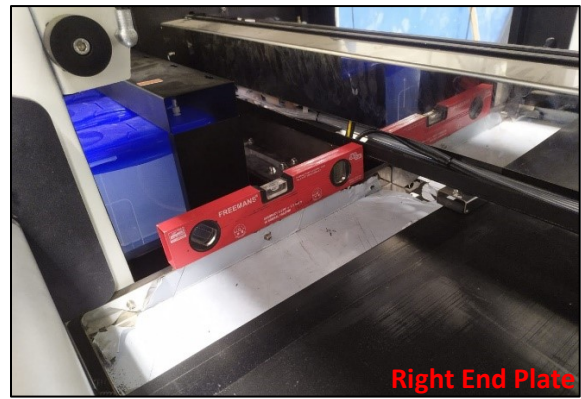
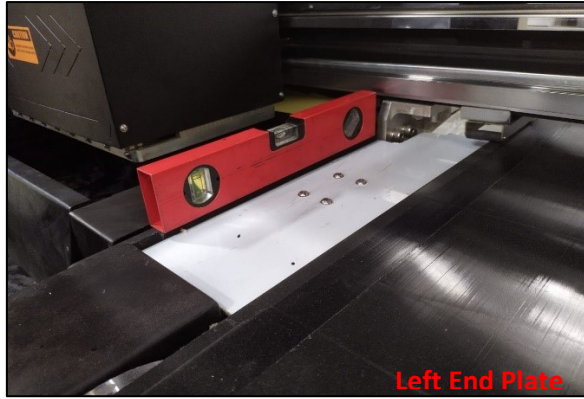


The machine levelling is to be checked at the following locations:

A. Center of the boom for X axis



B. Left and Right End Plates for Y axis



Use the inner corner levelers (fitted with leveler block) to level the machine.

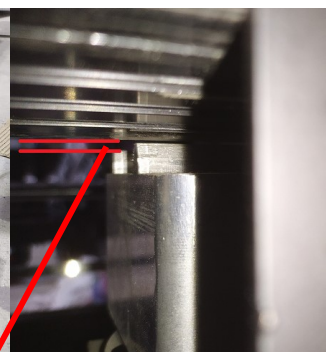
Note: Do not use outside levelers primarily for levelling

30 ARC Minutes level difference is acceptable while levelling the machine.

After machine is levelled, just floor and slightly lock the outside levellers

Insert the washing tub into its place, by adjusting the trolley wheels up or down, so that tub base passes clear through the actuator blocks.

Note: Do not open/lower the trolley wheel threads too much.



Actuator block

Trolley wheel

Gap between Actuator block and Tub base